



Visit any of our store locations to discuss your plant selections with one of our lawn & garden experts!

Brookfield

14845 W Capitol Drive
(262) 783-2323

Milwaukee

5400 S. 27th Street
(414) 761-5400

Wauwatosa

12217 Watertown Plank
(414) 763-6599

Greenfield

3725 S. 108th Street
(414) 328-5600

Waukesha

2220 E Moreland Blvd
(262) 797-7070

Racine

6626 Washington Ave
(262) 886-7900

Mequon

10850 N Port Washington
(262) 241-2121

West Bend

601 Wildwood Road
(262) 338-5252

Appleton

4860 W Wisconsin Ave
(920) 735-7777

Oshkosh

300 S. Koeller Street
(920) 426-6300

Green Bay

980 Waube Lane
(920) 339-2200

Big Bend

571 W23445 National
(262) 662-5800

Kenosha

6300 Green Bay Road
(262) 605-0280

Germantown

W184 N9676 Appleton
(262) 253-1147

Oconomowoc

1570 Unity Drive
(262) 560-4191

Bellevue

2727 Eaton Road
(920) 884-2255

Kimberly

710 Cobblestone Lane
(920) 687-5013



Corsican Mint

Mentha requienii

Height: 1 inch

Spread: 12 inches

Sunlight:

Hardiness Zone: (annual)

Description:

The smallest of Mints, this variety forms a flat carpet of tiny green leaves with intense fragrance; plant between flagstones as groundcover; will often self seed for years; a great base plant for containers

Ornamental Features

Corsican Mint features tiny spikes of lilac purple tubular flowers rising above the foliage from mid to late summer. Its attractive tiny fragrant round leaves remain green in color throughout the season.

Landscape Attributes

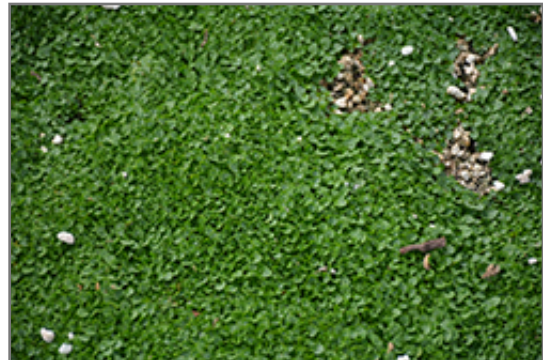
Corsican Mint is an herbaceous annual with a ground-hugging habit of growth. It brings an extremely fine and delicate texture to the garden composition and should be used to full effect.

This is a relatively low maintenance plant, and should be cut back in late fall in preparation for winter. It is a good choice for attracting bees and butterflies to your yard, but is not particularly attractive to deer who tend to leave it alone in favor of tastier treats. Gardeners should be aware of the following characteristic(s) that may warrant special consideration;

- Invasive

Corsican Mint is recommended for the following landscape applications;

- Mass Planting
- Rock/Alpine Gardens
- Border Edging
- General Garden Use
- Container Planting



Corsican Mint foliage
Photo courtesy of NetPS Plant Finder

We are so proud of the nursery stock that we have carefully selected for superior quality and performance, WE GUARANTEE ALL TREES, SHRUBS, EVERGREENS FOR 2 YEARS, AND ROSES FOR 1 YEAR!



Visit any of our store locations to discuss your plant selections with one of our lawn & garden experts!

Brookfield

14845 W Capitol Drive
(262) 783-2323

Milwaukee

5400 S. 27th Street
(414) 761-5400

Wauwatosa

12217 Watertown Plank
(414) 763-6599

Greenfield

3725 S. 108th Street
(414) 328-5600

Waukesha

2220 E Moreland Blvd
(262) 797-7070

Racine

6626 Washington Ave
(262) 886-7900

Mequon

10850 N Port Washington
(262) 241-2121

West Bend

601 Wildwood Road
(262) 338-5252

Appleton

4860 W Wisconsin Ave
(920) 735-7777

Oshkosh

300 S. Koeller Street
(920) 426-6300

Green Bay

980 Waube Lane
(920) 339-2200

Big Bend

571 W23445 National
(262) 662-5800

Kenosha

6300 Green Bay Road
(262) 605-0280

Germantown

W184 N9676 Appleton
(262) 253-1147

Oconomowoc

1570 Unity Drive
(262) 560-4191

Bellevue

2727 Eaton Road
(920) 884-2255

Kimberly

710 Cobblestone Lane
(920) 687-5013

Planting & Growing

Corsican Mint will grow to be only 1 inch tall at maturity, with a spread of 12 inches. Its foliage tends to remain low and dense right to the ground. Although it's not a true annual, this fast-growing plant can be expected to behave as an annual in our climate if left outdoors over the winter, usually needing replacement the following year. As such, gardeners should take into consideration that it will perform differently than it would in its native habitat.

This plant does best in full sun to partial shade. It prefers to grow in average to moist conditions, and shouldn't be allowed to dry out. It is not particular as to soil type or pH. It is highly tolerant of urban pollution and will even thrive in inner city environments. This species is not originally from North America. It can be propagated by division.

Corsican Mint is a fine choice for the garden, but it is also a good selection for planting in outdoor pots and containers. Because of its spreading habit of growth, it is ideally suited for use as a 'spiller' in the 'spiller-thriller-filler' container combination; plant it near the edges where it can spill gracefully over the pot. Note that when growing plants in outdoor containers and baskets, they may require more frequent waterings than they would in the yard or garden.

We are so proud of the nursery stock that we have carefully selected for superior quality and performance, WE GUARANTEE ALL TREES, SHRUBS, EVERGREENS FOR 2 YEARS, AND ROSES FOR 1 YEAR!